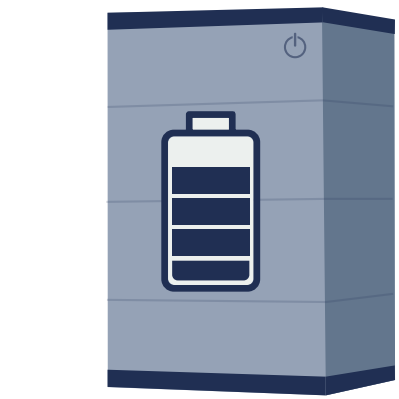
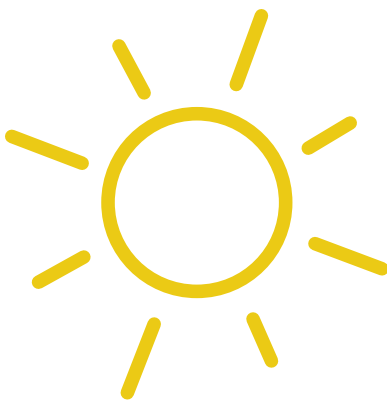
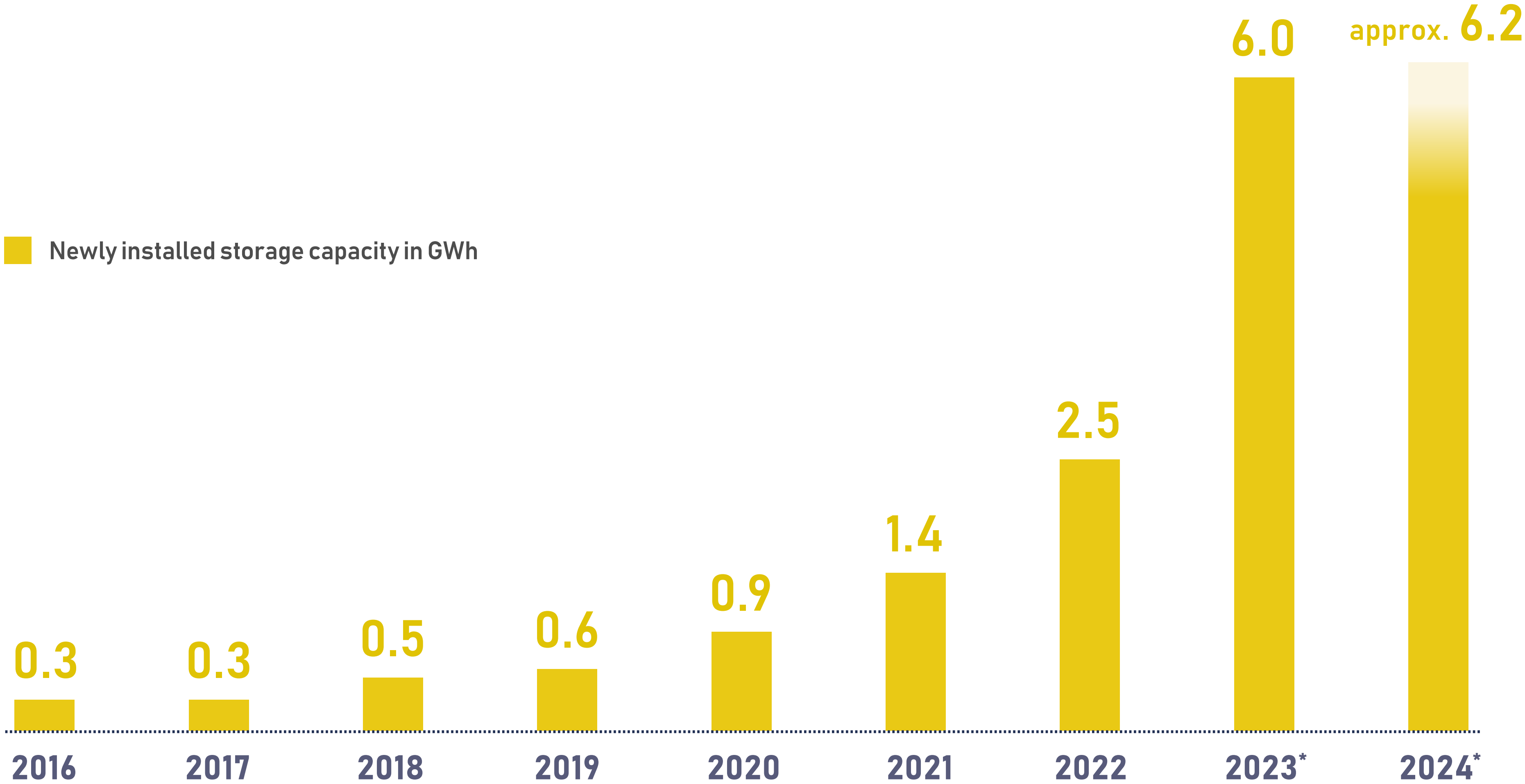


Battery storage capacity additions in Germany remain at record levels

Commercial & Industrial and Mass Storage exhibit significant growth



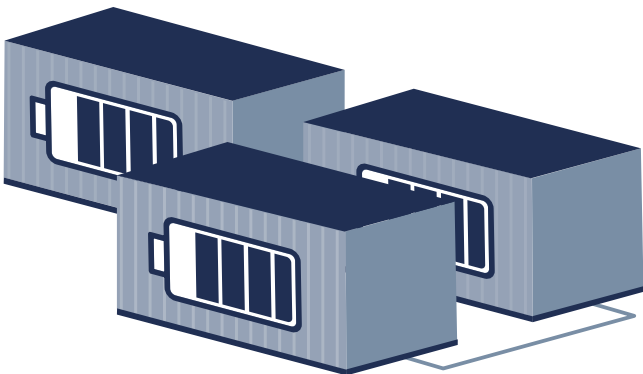
Residential Storage

approx. - 7%



Commercial & Industrial Storage

approx. + 25%



Mass Storage

approx. + 140%

* Revisions and changes to be expected due to late registrations. Includes estimates of expected late registrations (until the end of 2025) on the basis of observed registration patterns in previous years.

Source: BSW-Solar, own calculations based on MaStR as of 02/24/2025.